



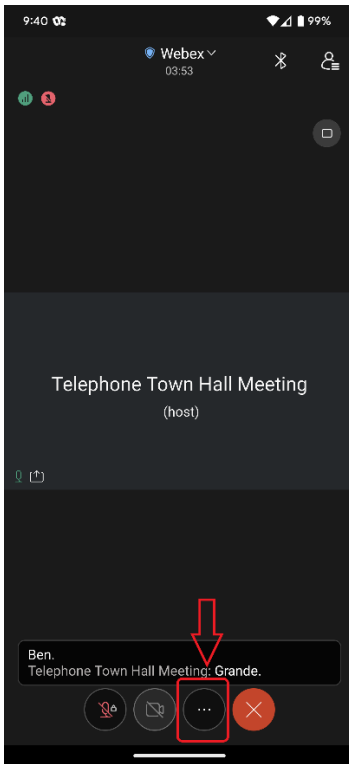
City of Dallas

HOW TO JOIN WEBEX AND SELECT YOUR PREFERRED LANGUAGE (MOBILE)

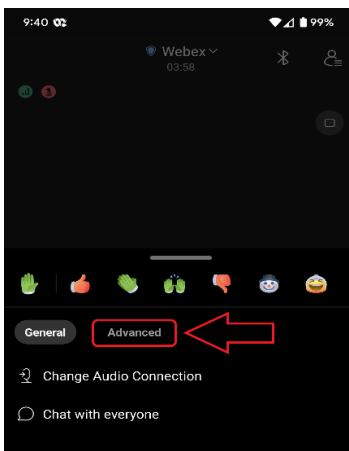
MANDARIN

如何加入 Webex 并选择语言（手机端）？

- 1) 请使用 WebEx 移动应用程序来直播“电话市政厅会议” (Telephone Town Hall Meetings), 并通过 WebEx 应用程序选择语言。首先, 打开应用程序, 点击屏幕右下角的三个圆点:



- 2) 然后选择“高级”:

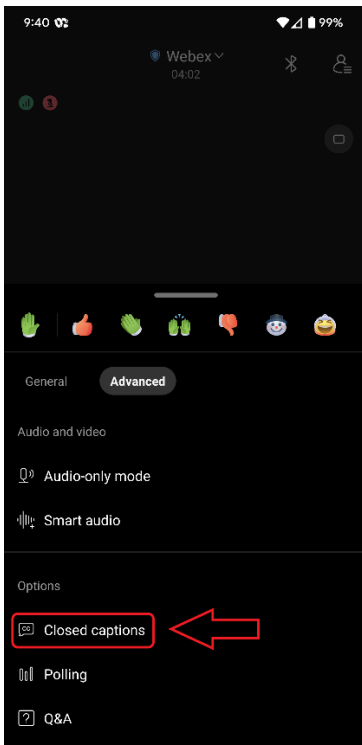


Email inquiries@tthm.com for assistance. All inquiries must be submitted in English. [Google Translate](#)

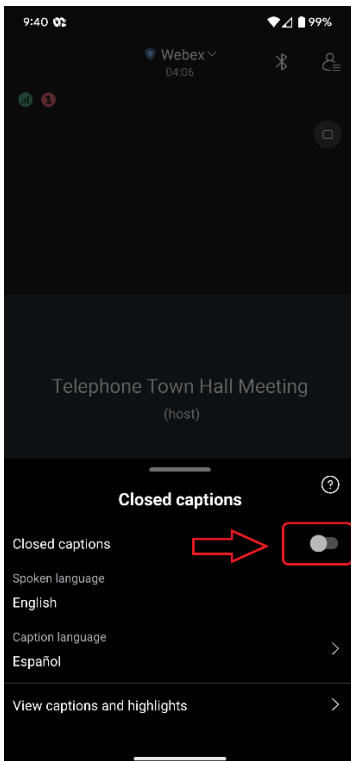


City of Dallas

3) 然后选择“字幕”：



4) 然后点击最右边的按钮，打开“字幕”。

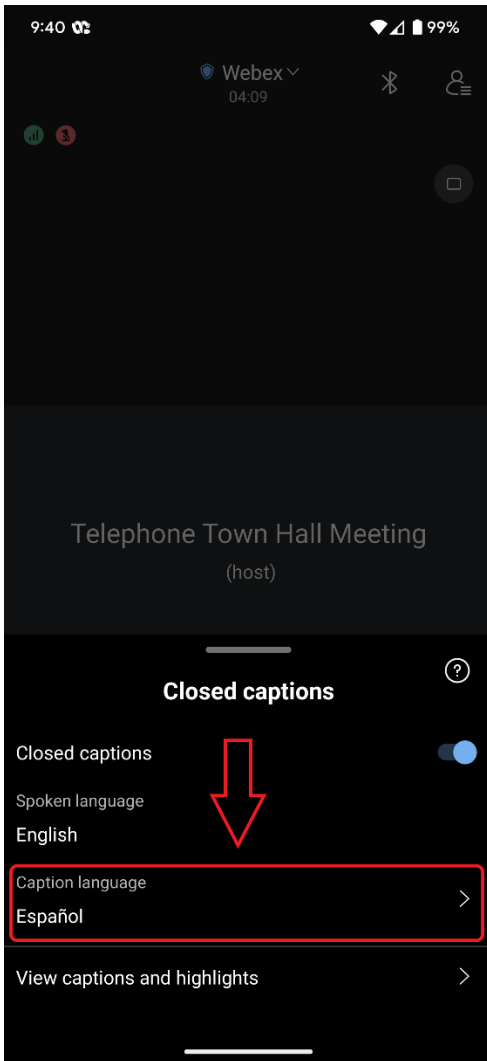


Email inquiries@tthm.com for assistance. All inquiries must be submitted in English. [Google Translate](#)



City of Dallas

5) 然后在屏幕底部，选择所需语言。



准备就绪！论坛开始后，将会看到对话的书面翻译。

Email inquiries@tthm.com for assistance. All inquiries must be submitted in English. [Google Translate](#)



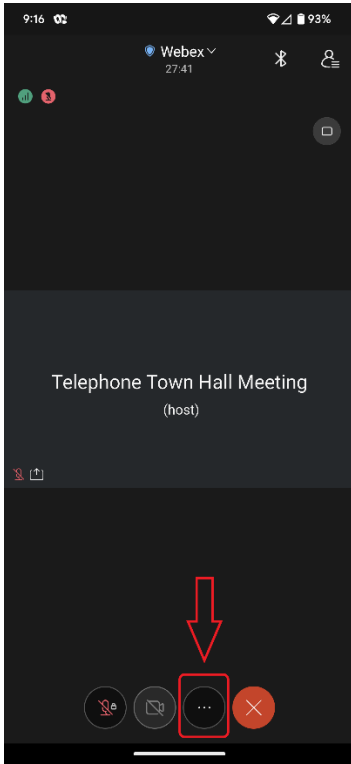


City of Dallas

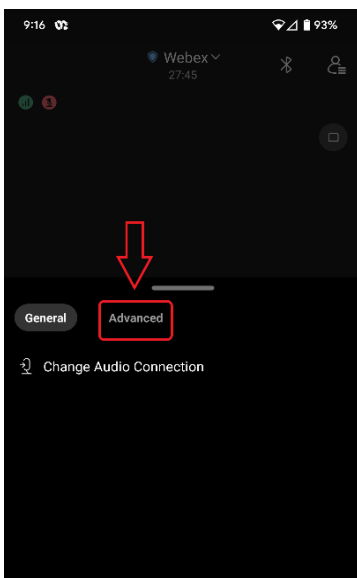
HOW TO SUBMIT A QUESTION DURING THE LIVE FORUM (MOBILE APP)

如何在现场论坛期间提交问题（手机端）

1) 若使用 WebEx 移动应用程序在手机端提问，首先，请点击屏幕右下方的三个圆点：



2) 然后点击“高级”：

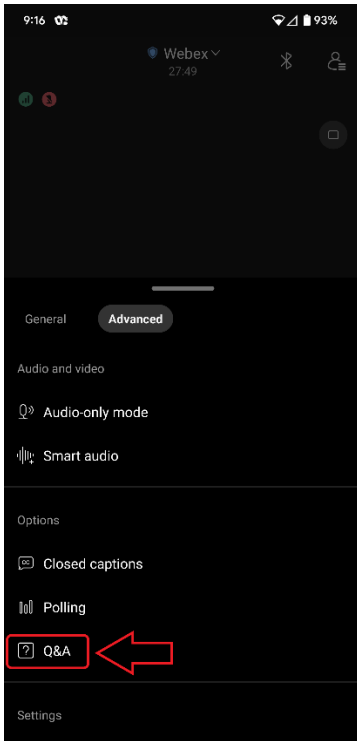


Email inquiries@tthm.com for assistance. All inquiries must be submitted in English. [Google Translate](#)

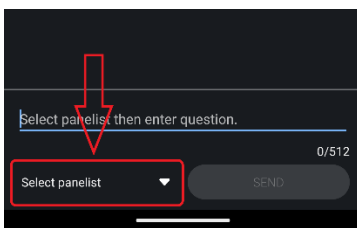


City of Dallas

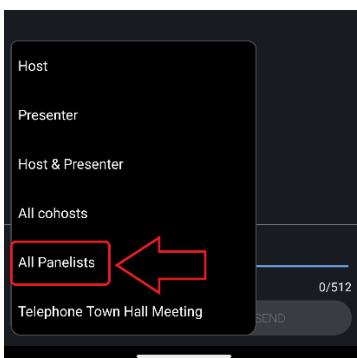
3) 然后点击“问答”：



4) 然后点击“选择小组成员”



5) 选择“所有小组成员”：

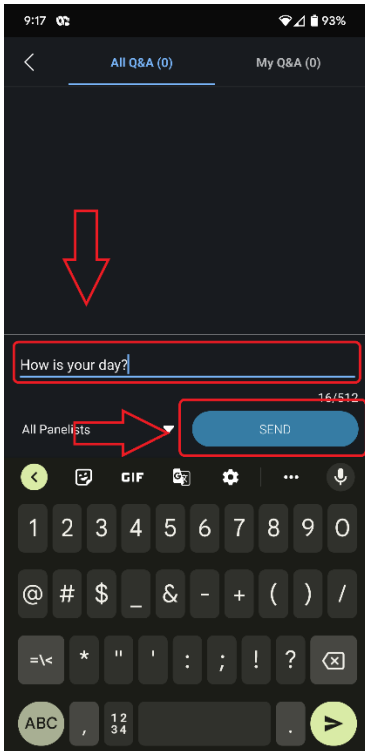


Email inquiries@tthm.com for assistance. All inquiries must be submitted in English. [Google Translate](#)

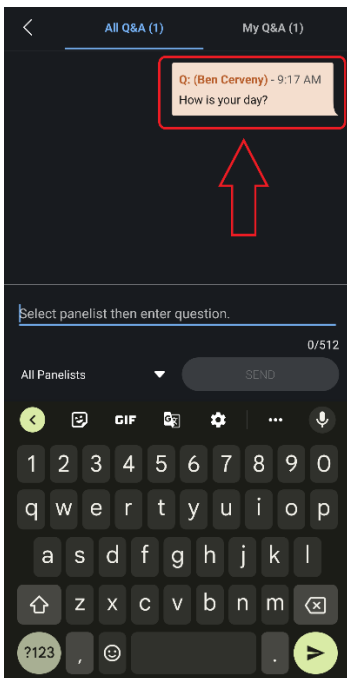


City of Dallas

6) 请务必使用英文提交问题，以便在场人士阅读问题。对于需要协助将问题翻译成英文的人士，可以使用[谷歌翻译](#)。在问题框中输入或复制/粘贴问题，然后点击“发送”：



7) 可于“所有问答”项下看到所提交的问题。



Email inquiries@tthm.com for assistance. All inquiries must be submitted in English. [Google Translate](#)